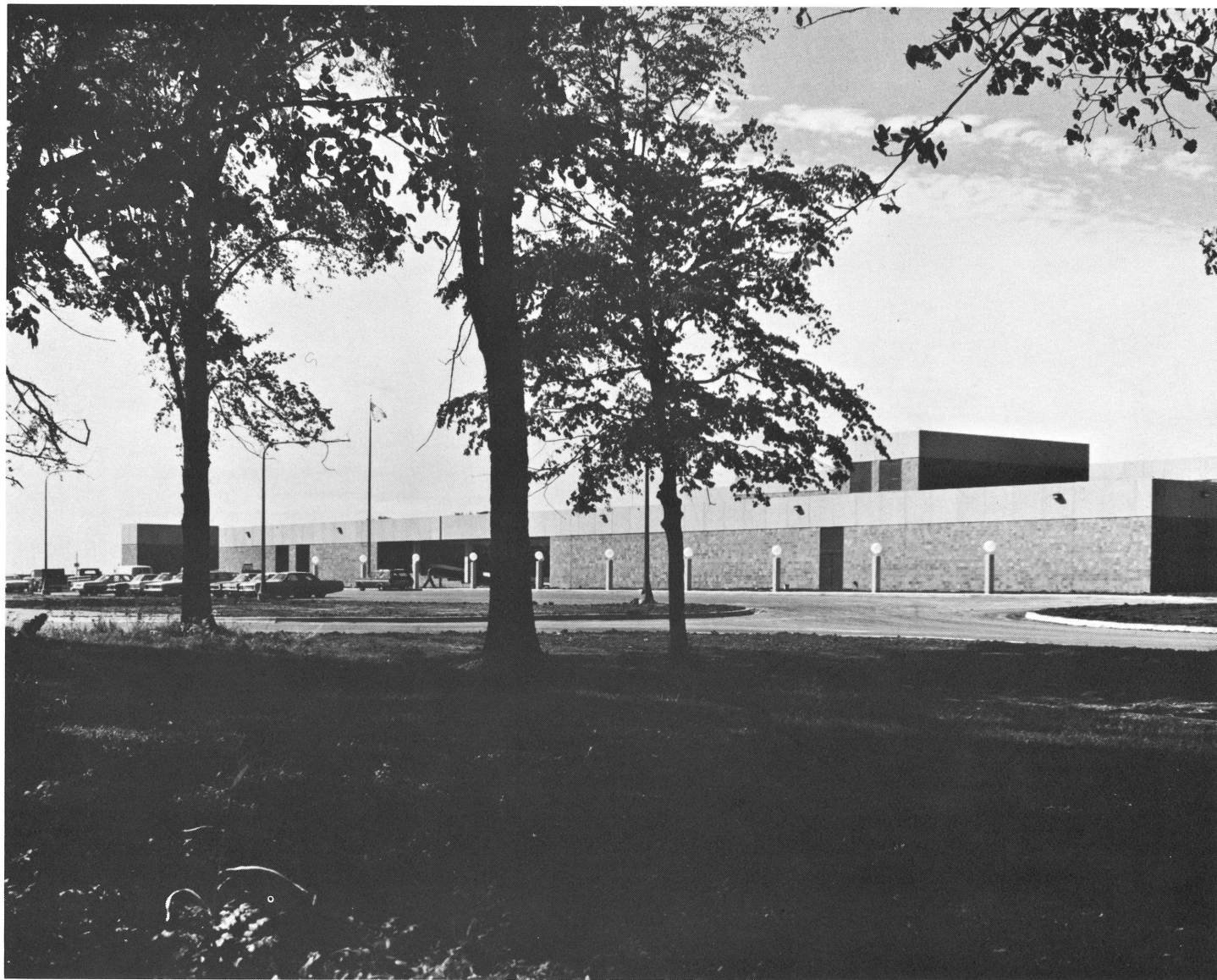
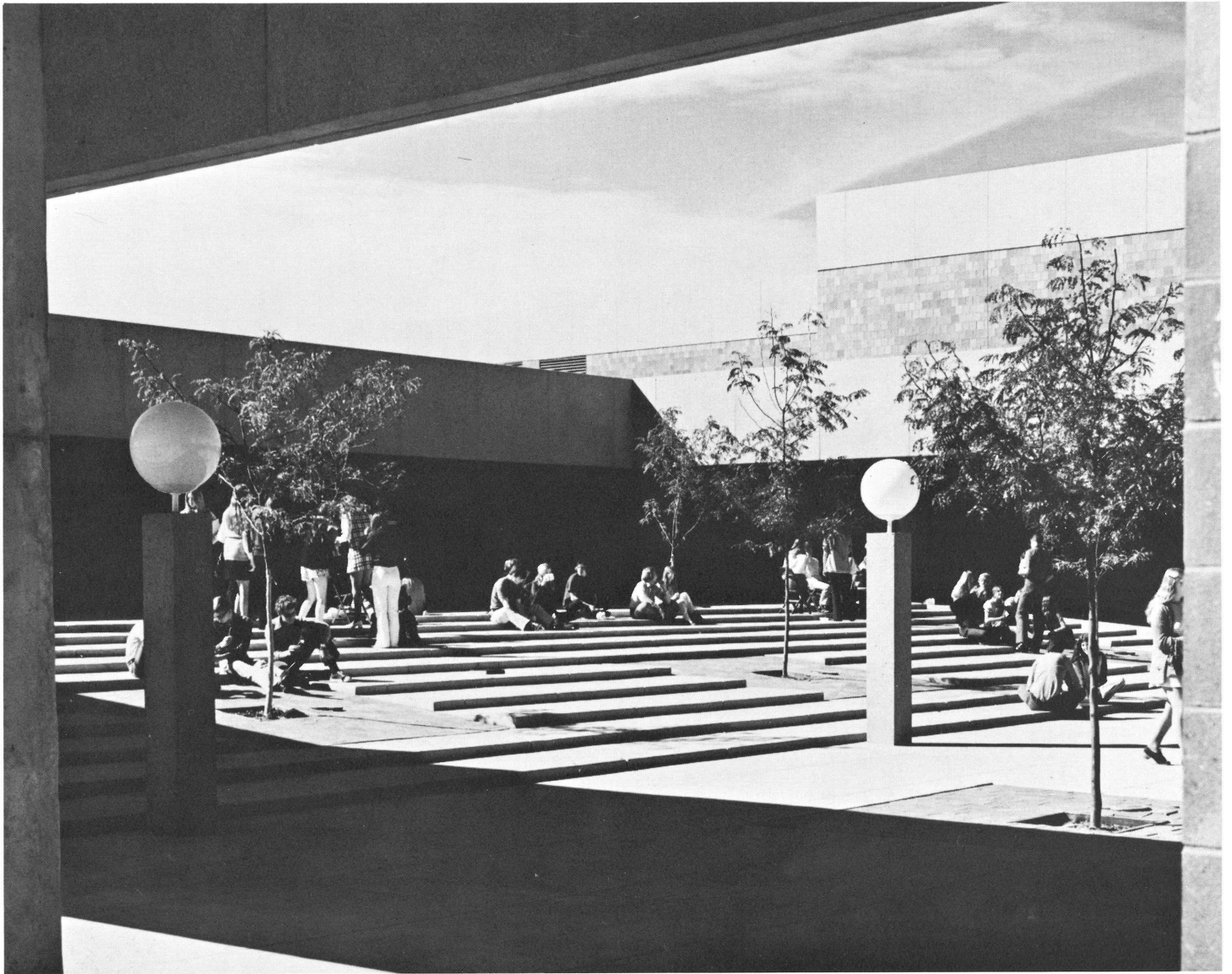


**Mound Westonka High School
Independent School District 277
Mound, Minnesota**



MAIN ENTRANCE

Hammel Green & Abrahamson



ENTRANCE COURT



INSTRUCTIONAL MATERIALS CENTER



MAIN STREET, UPPER LEVEL

Mound Westonka High School, at the west edge of Lake Minnetonka, is designed to be the educational center for 1200 senior high school students; it is expandable to accommodate 2400 students in future years. The building occupies a seventy acre site which it shares with an existing elementary school. The site includes adequate space for generous physical education fields, a varsity football field, parking, and a fine stand of native trees which were carefully preserved. The building is sited to take advantage of this

preserve.

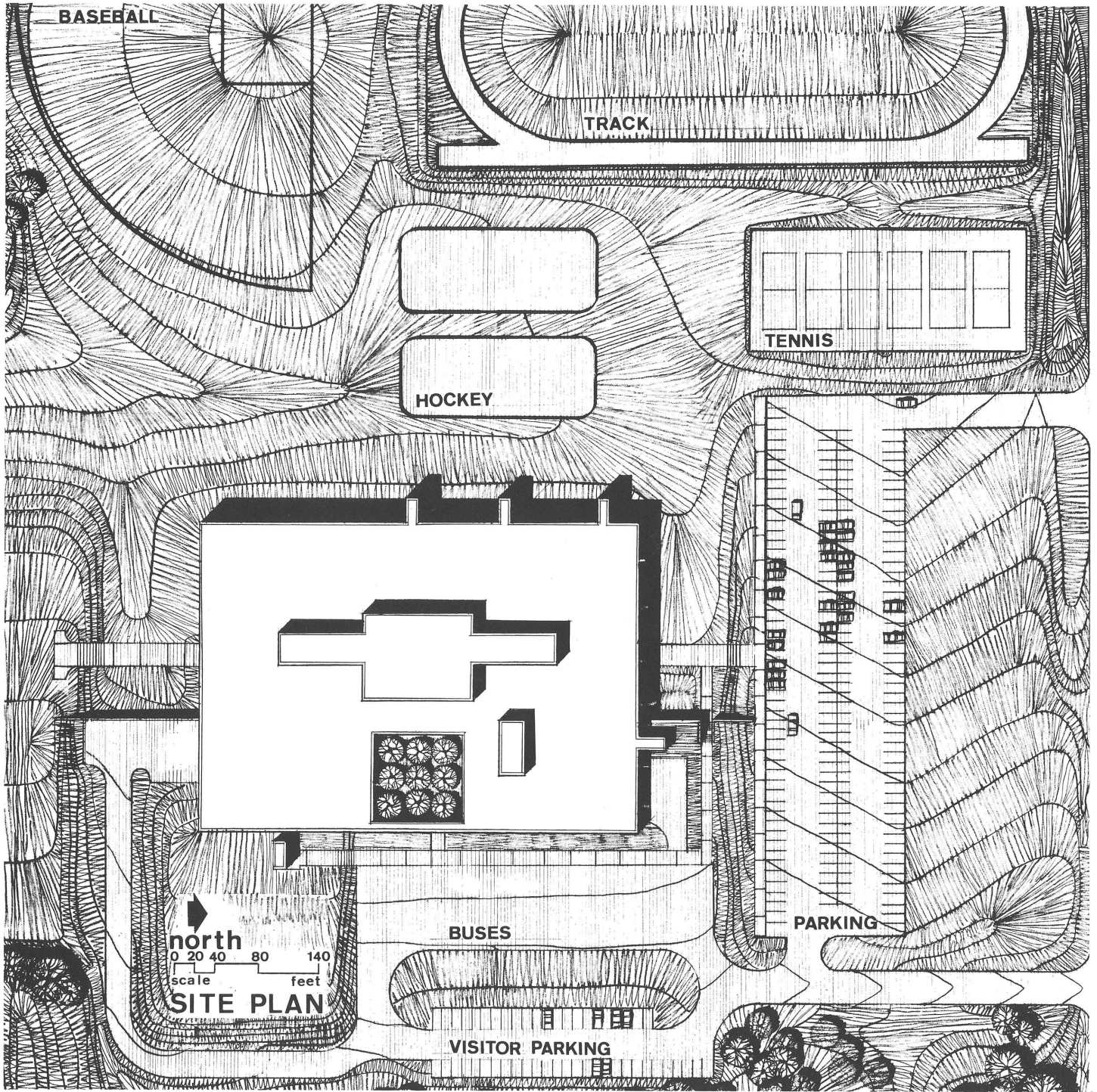
Generous "streets" on both floors provide access to departmental areas removed from traffic and noise. A portion of the upper level street is a student dining area at lunch time and an independent study center in the morning and afternoons. The instructional materials center becomes a major element in the street-scape as it extends through the upper level and opens into it in the lower level. The entrance court, sheltered by a

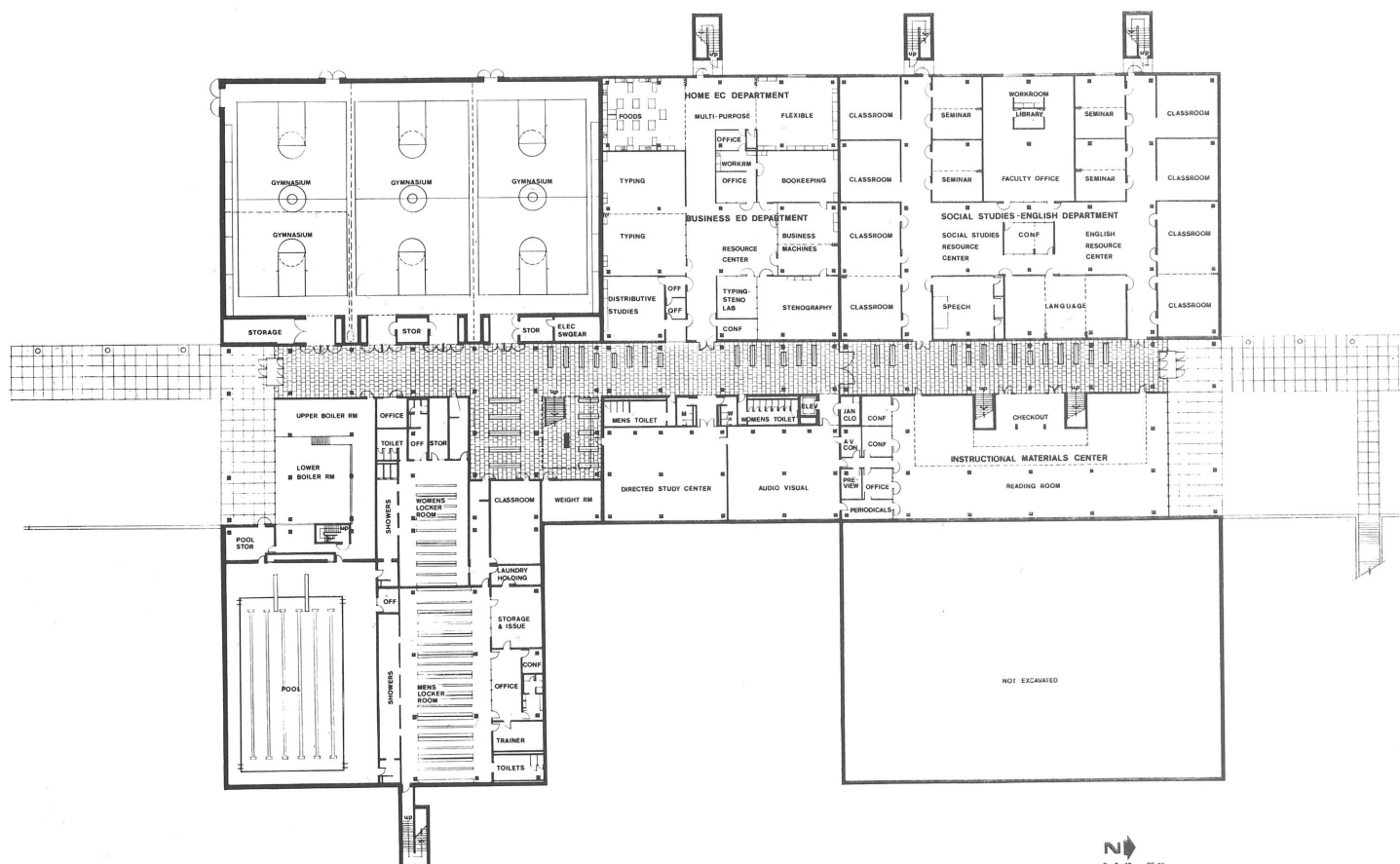
generous overhang, provides a space for outdoor dining and a gathering space for student groups.

The building systems were selected to provide great adaptability to future change where such could be reasonably anticipated; as an example the English and Social-Studies area was completely finished prior to the installation of partitions. Lighting, power, signal and heating-ventilation systems throughout were designed to permit rearrangement of spaces.



RESOURCE CENTER, BUSINESS EDUCATION DEPARTMENT





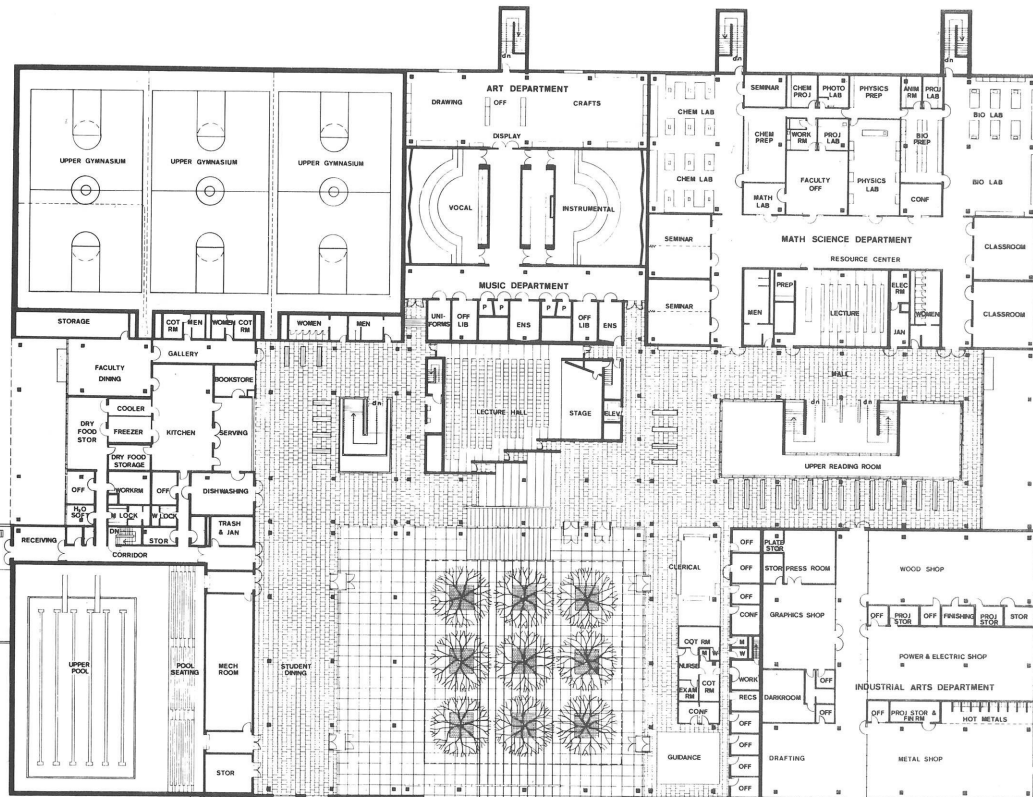


 0 5 10 20 30

 scale feet

 FIRST FLOOR PLAN

STREETS ON EACH FLOOR (SHADED) GIVE ACCESS TO LEARNING AREAS



0 5 10 20 25
scale feet

SECOND FLOOR PLAN